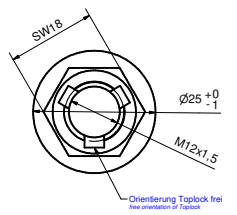
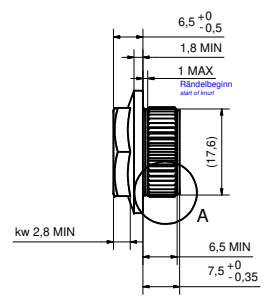
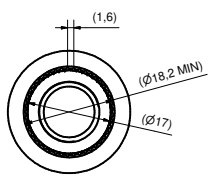
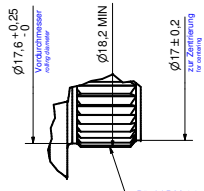


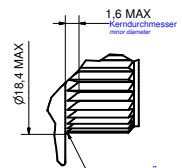
MODIFICATIONS			Sign	Datum	Signature
No.	Field	Before	(A)		
			(B)		
			(C)		



A (4 : 1)  
gewaltes Rändel  
rolled knurl



A (4 : 1)  
gepresstes Rändel  
formed knurl



Rändel RAA 1,6 - ähnlisch DIN82 / ASME B94.6  
knurling RAA 1,6 - similar DIN82 / ASME B94.6

konischer Übergang für geformtes Rändel (Ø 17,6 entfällt)  
conical transition for cold formed knurl (Ø 17,6 is omitted)

fehlende Maße nach DIN EN 1667  
Sonstige Anforderungen und Prüfungen nach DIN EN ISO 21670  
Helicoilfähig  
selbstsichernd, Anforderungen und Prüfung nach DIN EN ISO 2320  
Mutter axial verformt "Top-Lock"  
- abweichend zu DIN EN ISO 2320 -  
1. Aufschraubmoment max 14Nm  
missing dimensions acc to DIN EN 1667  
missing requirements and tests acc to DIN EN ISO 21670  
helicoilable  
self locking, additional requirements to DIN EN ISO 2320  
self locking feature of type "Toplock"  
- deviation from DIN EN ISO 2320 - 1st screw on torque max 14Nm

Werkstückkanten nach  
edges according  
DIN ISO 13715

Allgemein-toleranzen		ISO 4759-1A		Material		ISO 898-6 - FK10		Oberfläche		GS90010 - ZNNIV SI	
Form- und Lagetoleranz	ISO 1101	Form- und Lagetoleranz	ISO 1101	Material	Stadium	Name	Stadium	Name	Material	Stadium	Name
002	low-MiB8 hinzu	31.03.20	Leighton		25.03.20	Leighton	25.03.20	LjPp			
001.a	Ausführung als gepresstes Rändel bildlich hinzu	27.03.20	Leighton	Werkstückkanten DIN ISO 13715							
001	Detail hinzu, Toleranzen hinzu	25.03.20	Leighton								
000.a	helicoilfähig ergänzt	15.09.17	Leighton	Beschriftungen							
Index	Rev	Änderung	Kosten	Name	Antraggeber						

10.08.2020



This drawing is property of UNIOR d.d. No reproduction or access to third party is allowed without written permission Ta risba je last organizacije UNIOR d.d. Brez pisanega privolitja je ni dovoljeno razmnoževati tretjim osebam				ISO 128	CAD risba:	ACAD 14	Format A3
Arhiv:				Ročno spreminjanje originala ni dovoljeno			
Design	Datum	Name	Signature	 Industrial plant Konjice-II			
Drawn	19.7.2020	NAPOTNIK J.					
Checked	19.7.2020	RAVNIČAN J.					
Material		Surface					
ISO898-6 - FK10		GS90010-ZNNIV SI					
For machine	Scale	Title		Part number:			
/	1:1	Matica za vstavljanje M12x1.5 AKC		630161-1010-005			
For: ZF BMW ICE				Substitute for: /			