

SH	APPLICATION		REVISIONS			
	NEXT ASSY	USED ON		DESCRIPTION	DATE	APPROVED
			-	Release per ECN-6089243	SEE PDM	SEE PDM

DWG.No 74380925

HONEYWELL PART NUMBER	SUGGESTED SOURCE(S) (CAGE CODE)	SUPPLIER PART NUMBER
74380925-001	US ARMY MISSILE COMMAND REDSTONE ARSENAL, ALABAMA (18876)	13213926

ONLY THE ITEM(S) DESCRIBED ON THIS DRAWING WHEN PROCURED FROM THE VENDOR(S) LISTED HEREON IS APPROVED BY HONEYWELL INTL, CLEARWATER, FLORIDA, FOR USE IN THE APPLICATION(S) SPECIFIED HEREON. A SUBSTITUTE ITEM(S) SHALL NOT BE USED WITHOUT PRIOR APPROVAL BY HONEYWELL INTL.

IDENTIFICATION OF THE APPROVED SOURCE(S) OF SUPPLY HEREON IS NOT TO BE CONSTRUED AS A GUARANTEE OF PRESENT OR CONTINUED AVAILABILITY AS A SOURCE OF SUPPLY FOR THE ITEM DESCRIBE ON THE DRAWING.

THIS DRAWING IMPOSES NO ADDITIONAL REQUIREMENTS TO THE MANUFACTURER PART NUMBERS LISTED HEREIN.

DISTRIBUTION STATEMENT B: Distribution authorized to U.S. Government agencies only. Reason: Administrative or operational use; Date of determination: 8 February 2018. Other requests for this document shall be referred to the PFRMS Project Office, ATTN: SFAE-MSL-PFV, Redstone Arsenal, AL 35898-8000.

LIMITED RIGHTS

Contract No.: W31P4Q-16-C-0036

Contractor Name: Honeywell International

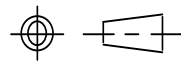

Contractor Address: 13350 US Highway 19N, Clearwater, FL 33764

The Government's rights to use, modify, reproduce, release, perform, display, or disclose these technical data are restricted by paragraph (b)(3) of the Rights in Technical Data—Noncommercial items clause contained in the above identified contract. Any reproduction of technical data or portions thereof marked with this legend must also reproduce the markings. Any person, other than the Government, who has been provided access to such data must promptly notify the above named Contractor.

EXPORT-CONTROL ACT WARNING: This document contains technical data whose export is restricted by Arms Export Act (Title 22, U.S.C., Sec 2751 ET SEQ.) or the Export Administration Act of 1979. (Title 50, U.S.C., app. 2401 ET SEQ.), as amended. Violations of these Export Laws are subject to sever criminal penalties. Disseminate in accordance with provisions of DoD Direction 5230.25

VENDOR ITEM CONTROL DRAWING

ALL SHEETS ARE THE SAME REVISION STATUS

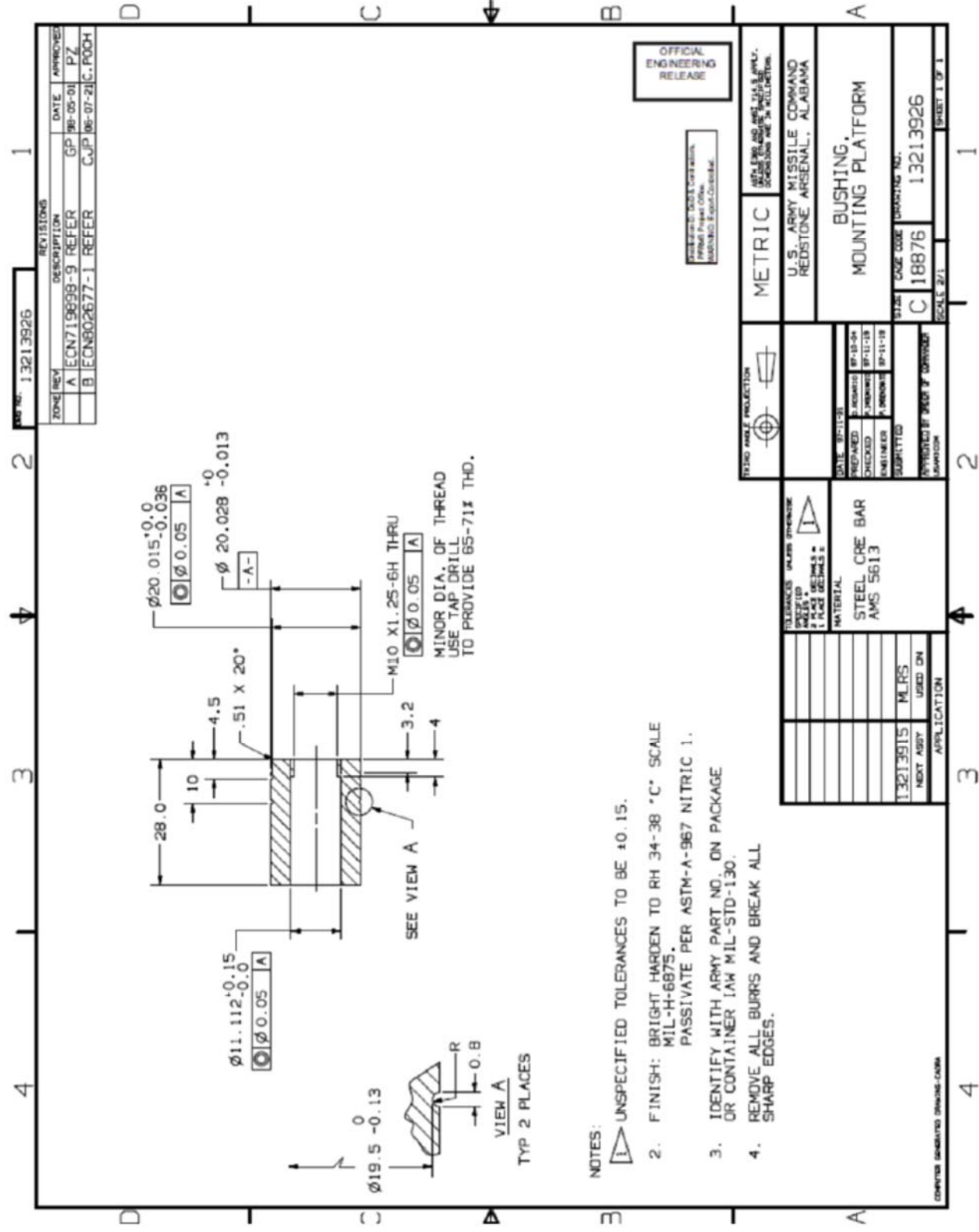
THIRD ANGLE PROJECTION 	CAD OPR				AES CLEARWATER DEFENSE 13350 US HWY 19 NO. CLEARWATER, FL 33764	
	CHECKER					
UNLESS OTHRWISE SPECIFIED DIMENSIONS ARE IN INCHES TOLERANCES ON: $\angle \pm$ $.XX \pm$ $.XXX \pm$ MATERIAL	DEV ENGR			BUSHING, MOUNTING PLATFORM		
	ENGRG MGT					
	PA					
	PE					
	PM			SIZE A	CAGE CODE 0BFA5	DRAWING NUMBER 74380925
	CONTRACT NUMBER			SCALE	WT	SHEET 1 OF 2
	W31P4Q-16-C-0036					

This drawing is subject to the U.S. Department of Commerce Export Administration Regulations (EAR) as a result of Export Reform.

This marking supersedes any other jurisdictional markings that may appear on this document.

TYPE OF CHECK	0	1	2	3	4	5
---------------	---	---	---	---	---	---

PRODUCTION - Released - 27 Oct 2020 10:50:54 UTC



- NOTES:
- UNSPECIFIED TOLERANCES TO BE ± 0.15.
 - FINISH: BRIGHT HARDEN TO RH 34-38 °C° SCALE MIL-H-6875. PASSIVATE PER ASTM-A-967 NITRIC 1.
 - IDENTIFY WITH ARMY PART NO. ON PACKAGE OR CONTAINER IAW MIL-STD-130.
 - REMOVE ALL BURRS AND BREAK ALL SHARP EDGES.

OFFICIAL ENGINEERING RELEASE

STANDARD: AMS 5613
MATERIAL: STEEL CRE BAR

DATE: 07-11-18	DATE: 07-11-18	DATE: 07-11-18	DATE: 07-11-18
PREPARED BY: []	CHECKED BY: []	ENGINEER: []	SUBMITTED BY: []
METRIC U.S. ARMY MISSILE COMMAND REDSTONE ARSENAL, ALABAMA BUSHING, MOUNTING PLATFORM			
U.S. ARMY MISSILE COMMAND REDSTONE ARSENAL, ALABAMA			SCALE: 2/1 SHEET 1 OF 1

TOLERANCES UNLESS OTHERWISE SPECIFIED UNLESS OTHERWISE SPECIFIED PLACE DIMENSIONS IN MATERIAL: STEEL CRE BAR AMS 5613	
13213925	MURS
NEXT ASST. USED ON	APPLICATION

Honeywell AES CLEARWATER DEFENSE
13350 US HWY 19 NO.
CLEARWATER, FL 33764

PROTECT IN ACCORDANCE WITH SHEET 1

CAD OPERATOR	SIZE	CAGE CODE	DRAWING NUMBER	REV
CHECKER	A	0BFA5	74380925	-
	SCALE	WT	SHEET	2

TYPE OF CHECK	0	1	2	3	4	5
---------------	---	---	---	---	---	---