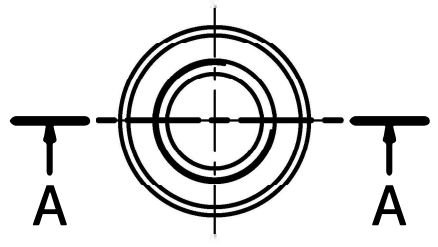


Section A-A


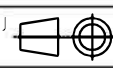


Isometric view ( 5 : 1 )



Notes

1. According to DIN7979 or ISO8735
- 2 Hardened to HRC 60±2

1	1	1006290-A (Cylindric pin DIN7979 5x12)			
Pos	Qty	Name-Rev (Information)			
Tolerances unless otherwise stated SS-ISO 2768-m K			Sharp edges broken unless otherwise stated		
General drawing					
Replaces					
Drawing standard: EN ISO					
210x297	Drawn	Date	Size	Name	
	MLG	2018-09-27	A4	Cylindric pin 5x12	
	Scale	Proj		Subtitle	
	5:1				
Belongs to P/N		Approved by	Approved date	Drawing number-Rev Sheet	Sheet no / of
				1006290-A	1 / 1