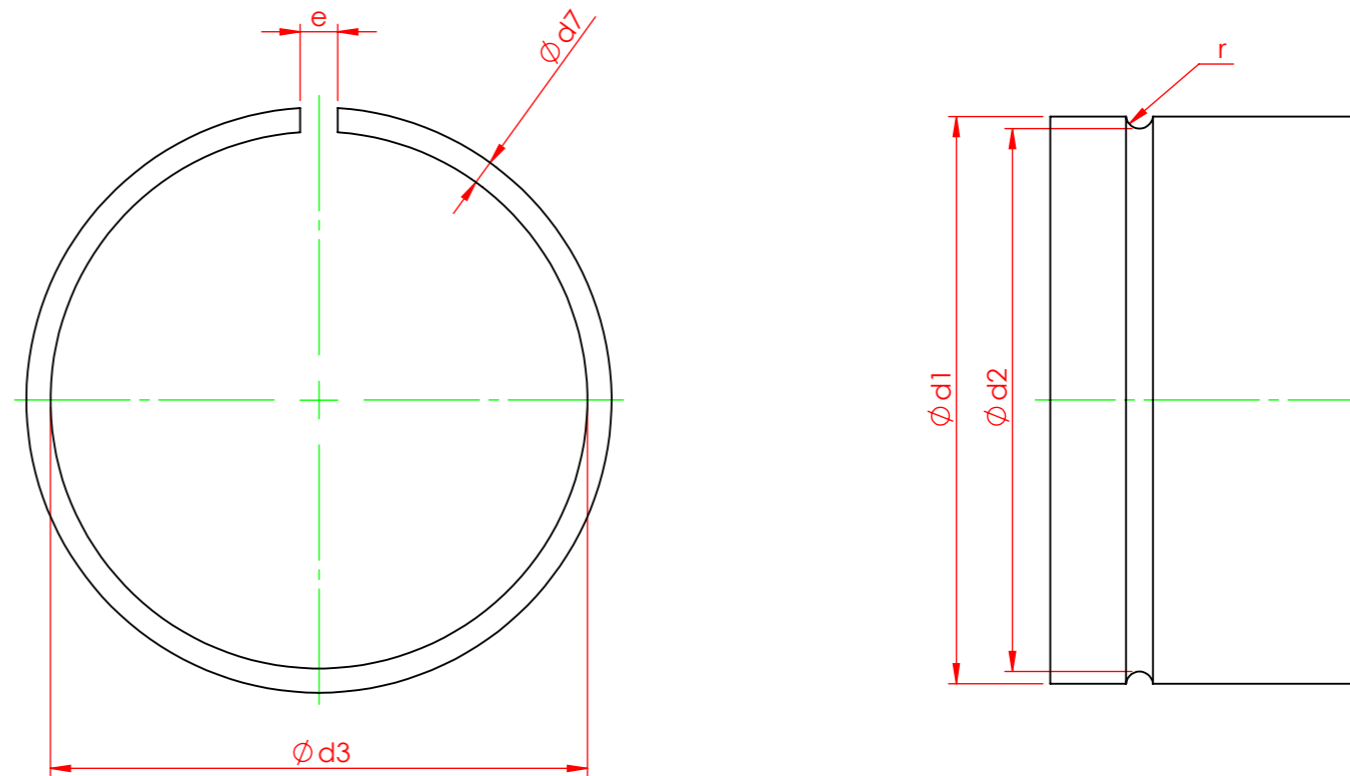


REVISIONS - SEE Q-PULSE FOR COMPLETE REVISION HISTORY			
ISSUE	DATE	MADE BY	ALTERATION
01	20/05/2015	MW	NEW ISSUE.

SIZE CODE	HOUSING DIMENSIONS			RING DIMENSIONS		
	d1	d2	r	d3	d7	e~
	mm	mm	mm	mm	mm	mm
001	4	3.2	0.5	3.1	0.8	1
002	5	4.2	0.5	4.1	0.8	1
003	6	5.2	0.5	5.1	0.8	1
004	7	6.2	0.5	6.1	0.8	2
005	8	7.2	0.5	7.1	0.8	2
006	10	9.2	0.5	9.1	0.8	2
007	12	11.0	0.6	10.8	1.0	3
008	14	13.0	0.6	12.8	1.0	3
009	16	14.4	0.9	14.2	1.6	3
010	18	16.4	0.9	16.2	1.6	3
011	20	18.0	1.1	17.7	2.0	3
012	22	20.0	1.1	19.7	2.0	3
013	24	22.0	1.1	21.7	2.0	3
014	25	23.0	1.1	22.7	2.0	3
015	26	24.0	1.1	23.7	2.0	3
016	28	26.0	1.1	25.7	2.0	3
017	30	28.0	1.1	27.7	2.0	3
018	32	29.5	1.4	29.7	2.5	4
019	35	32.5	1.4	32.1	2.5	4
020	38	35.5	1.4	35.1	2.5	4
021	40	37.5	1.4	37.1	2.5	4
022	42	39.5	1.4	39.1	2.5	4
023	45	42.5	1.4	42.0	2.5	4
024	48	45.5	1.4	45.0	2.5	4
025	50	47.5	1.4	47.0	2.5	4
026	55	51.8	1.8	51.1	3.2	4
027	60	56.8	1.8	56.1	3.2	4
028	65	61.8	1.8	61.1	3.2	4
029	70	66.8	1.8	66.0	3.2	5
030	75	71.8	1.8	71.0	3.2	5
031	80	76.8	1.8	76.0	3.2	5
032	85	81.8	1.8	81.0	3.2	5
033	90	86.8	1.8	86.0	3.2	5
034	95	91.8	1.8	91.0	3.2	5
035	100	96.8	1.8	95.8	3.2	5
036	105	101.8	1.8	100.8	3.2	5
037	110	106.8	1.8	105.8	3.2	5
038	115	111.8	1.8	110.8	3.2	5
039	120	116.8	1.8	115.8	3.2	5
040	125	121.8	1.8	120.8	3.2	5



DEBUR AND BREAK SHARP EDGES	TOLERANCES DIN 7993A	PROJECTION THIRD ANGLE	MATERIAL SPRING STEEL	DRAWN BY MW	CHECKED BY JS	APPROVED BY JS
UNLESS OTHERWISE STATED: 3.2Ra SURFACE FINISH	DIMENSIONS ARE IN MILLIMETERS	DOCUMENT TYPE COMPONENT		DRAWING NUMBER 1400-506-000		
THIS DOCUMENT AND THE INFORMATION CONTAINED WITHIN, IS THE PROPERTY OF SABRE RAIL SERVICES LTD. IT IS PROTECTED UNDER LAW AND MUST NOT BE COPIED, REPRODUCED, SHARED, LOANED OR USED FOR ANY PURPOSE OTHER THAN THOSE FOR WHICH IT WAS SUPPLIED, WITHOUT THE EXPRESS WRITTEN PERMISSION OF THE MANAGING DIRECTOR.		GRINDON WAY HEIGHINGTON LANE BUSINESS PARK NEWTON Aycliffe COUNTY DURHAM DL5 6SH	TITLE RETAINING RINGS FOR SHAFTS	WEIGHT -	DO NOT SCALE DRAWING	SCALE 1:1
				DATE OF ISSUE 20/05/2015	REV. 01	SHEET 1/1