

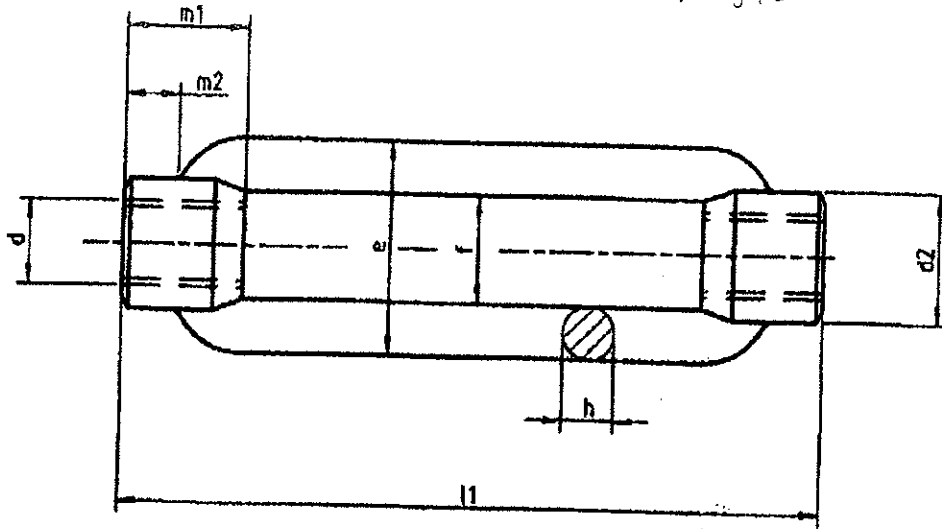
M56 steel black

QTY: 8 PCS or MOQ =

Price = /

Weight =

KG/PCS



Legend:

l - length
d2 - outer diameter
f - inside pitch
e - outside pitch
m1 - length of thread
m2 - length to the body

Steel Black

Makings:

Steel: steel S1 37
Stainless: A4-70
Plastic: -
Non Ferrous: -
Thread: -

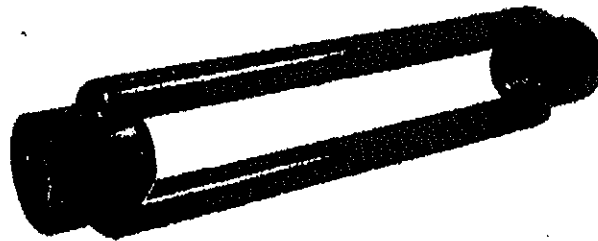
Notes:

hrc	M56
ad	
l1	355
m1	78
m2	39
e	135
f	65
h	40
d2	80

QTY: 8 PCS

DIN 1480 - Turnbuckles, forged (open form)

Current norm: DIN 1480
Equivalent norms: CSN 021940;



Tel: +886 4 2422 9712 Ext 307

Fax: +886 4 2422 9722

BOSSARD
TAIWAN

Asker #1307