

| | |
|--------------------------------------|----------------|
| SPECIAL CHARACTERISTIC CHART | |
| C/C (CRITICAL/SAFETY CHARACTERISTIC) | |
| F/F (FIT/FUNCTION CHARACTERISTIC) | |
| P/Q (PRODUCT/QUALITY CHARACTERISTIC) | |
| | |
| TYPE & NUMBER | CHARACTERISTIC |
| | |

GENERAL NOTES:
THIS DRAWING IS TT SAMPLE VERSION.

ANY AND ALL CHANGES TO THIS PART AND OR ASSEMBLY MUST BE APPROVED BY CUSTOMER AND BEFORE BEING IMPLEMENTED.

"CUSTOMER" MUST APPROVE ALL FIXTURES AND JIGS.

"CUSTOMER" MUST REVIEW AND APPROVE SHIPMENT DUNNAGE.

- PART MUST BE FREE OF CONTAMINATION FROM FOREIGN SUBSTANCE/LIQUID DURING STORAGE AND SHIPMENT

OBSERVE CLASS "m" IN TOLERANCE TABLE FOR UNMARKED ALLOWANCE PER ISO 2768-M

COMPLY WITH "CUSTOMER" 'S ECO-FRIENDLY SUPPLY CHAIN MANAGEMENT GUIDELINES FOR HAZARDOUS SUBSTANCE / MATERIAL COMPONENTS.

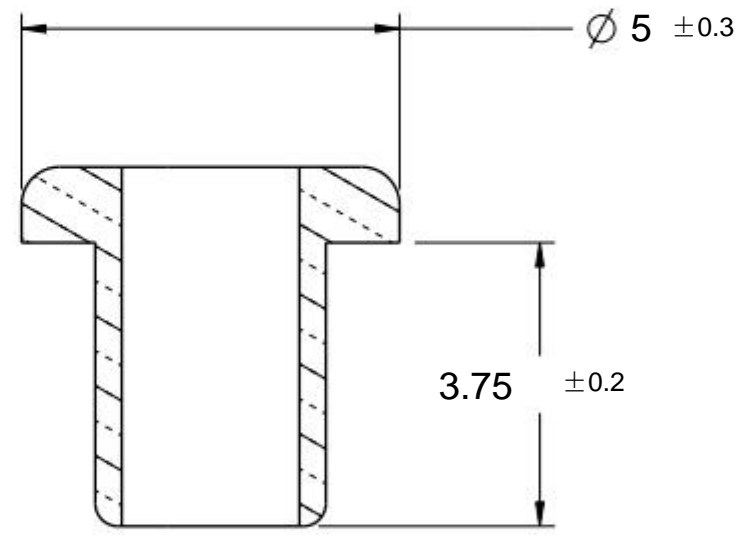
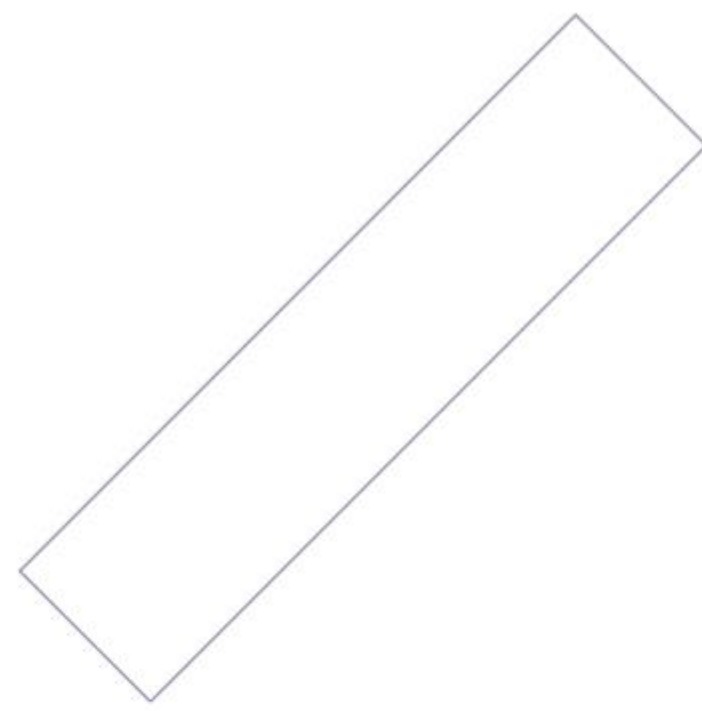
COMPLY WITH "CUSTOMER" APPEARANCE STANDARD.

- APPEARANCE STANDARD MUST BE APPROVED BY "CUSTOMER"
- REGULATES FLASH, BURRS, SHARP EDGES, CORROSION, ETC

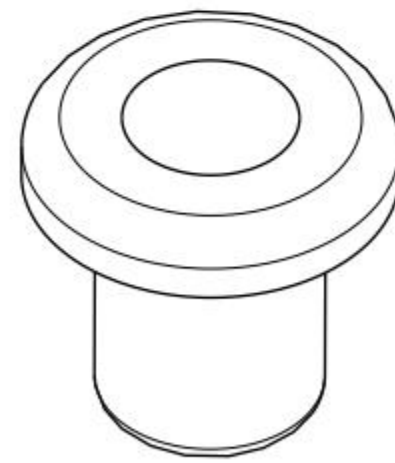
ALL INSPECTION REPORT VALUES TO BE REPORTED OUT TO THE SAME DECIMAL PLACE AS SHOWN ON DRAWING.

MEANS CTQ DIMENSION.

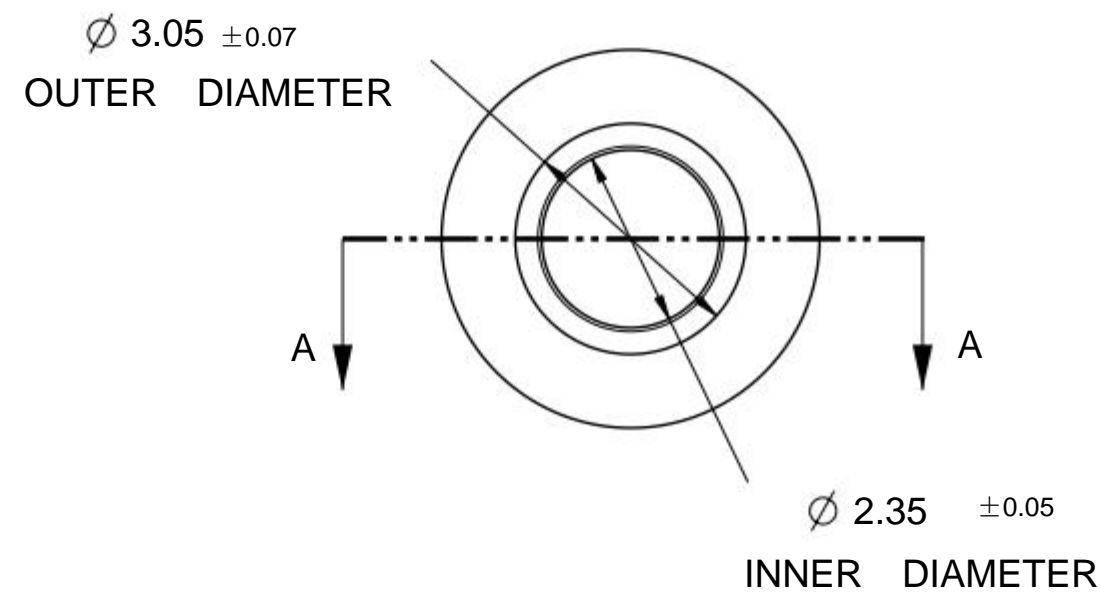
- 1) CTQ DIMENSIONS MUST MEET $Ppk \geq 1.67$ (DEVELOPMENT STAGE) & $Cpk \geq 1.33$ (SOP)
- 2) MUST SUBMIT DIMENSION MEASUREMENT REPORT BEFORE PART SHIPMENT
- 3) THE SAMPLE QUANTITY TO BE INSPECTED PER LOT SHIFT MUST MEET REQUIREMENT OF "CUSTOMER" .- 5 SET/LOT



Section view A-A (10:1)



Isometric view (10:1)



Front view (10:1)

LINEAR DIMENSIONS(ISO2768)

| | TOLERANCE CLASS | | | |
|-----------|-----------------|------|------|------|
| | f | m | c | v |
| *6 | ±0.05 | ±0.1 | ±0.3 | ±0.5 |
| 6-30 | ±0.1 | ±0.2 | ±0.5 | ±1.0 |
| 30-120 | ±0.15 | ±0.3 | ±0.8 | ±1.5 |
| 120-400 | ±0.2 | ±0.5 | ±1.2 | ±2.5 |
| 400-1000 | ±0.3 | ±0.8 | ±2.0 | ±4.0 |
| 1000-2000 | ±0.5 | ±1.2 | ±3.0 | ±6.0 |
| 2000-4000 | - | ±2.0 | ±4.0 | ±8.0 |

ANGULAR DIMENSIONS(ISO2768)

| | TOLERANCE CLASS | | | |
|---------|-----------------|---------|---------|---------|
| | f | m | c | v |
| *10 | ±1° | ±0.1 | ±1° 30' | ±3° |
| 10-50 | ±0° 30' | ±0° 30' | ±1° | ±2° |
| 50-120 | ±0° 20' | ±0° 20' | ±0° 30' | ±1° |
| 120-400 | ±0° 10' | ±0° 10' | ±0° 15' | ±0° 30' |
| 400° | ±0° 50' | ±0° 50' | ±0° 10' | ±0° 20' |

| BILL OF MATERIAL | | | | | | |
|------------------|-------------|-------------|----------|---------|------|------|
| SL.NO | PART NUMBER | DESCRIPTION | MATERIAL | COATING | QTY. | NOTE |
| 1 | MRV00013AC | RIVET | C1220 | N/A | 1 | |

| | | | | | | | |
|----------|----------------------|------------|-----------------------------------|----------|------------|------------|---|
| 19.05.17 | H.Lyons A.Dantule | ECN-001610 | DRAWING UPDATES - ADD FEW DETAILS | 18.10.05 | R.Merriman | ECN-001574 | DWG. UPDATES, RELIABILITY TEST ADDED FOR VP RELEASE |
| 17.07.26 | C.CHAUVIN | ECN-001488 | INITIAL RELEASE FOR MI | | | | |
| NO. | YYMMDD | SIGN. | E.C.N. | NO. | YYMMDD | SIGN. | E.C.N. |
| CONTENTS | | | | CONTENTS | | | |

| | | | | | |
|----------------------------|------------|------------|------------|--------------|------------|
| SYSTEM | | Department | | DATE | |
| | | | | 2017-07-26 | |
| DESIGNED | CHECKED | AGREED | APPROVED | DO NOT SCALE | |
| H.W.JUNG | A.Dantule | J.H.Bae | T.DeBastos | | |
| 2019-05-17 | 2019-05-17 | 2019-05-17 | 2019-05-17 | | |
| UNLESS OTHERWISE SPECIFIED | | | | SCALE | PROJECTION |
| | | | | 1 | 1.0 |
| | | | | N.S | |
| SEE BOM | | | | APPROVED | DIMENSION |
| SEE BOM | | | | | MILLIMETER |
| RIVET | | | | | |
| PART NO | | | | SIZE | DATE |
| | | | | A0N7 | 01 01 |