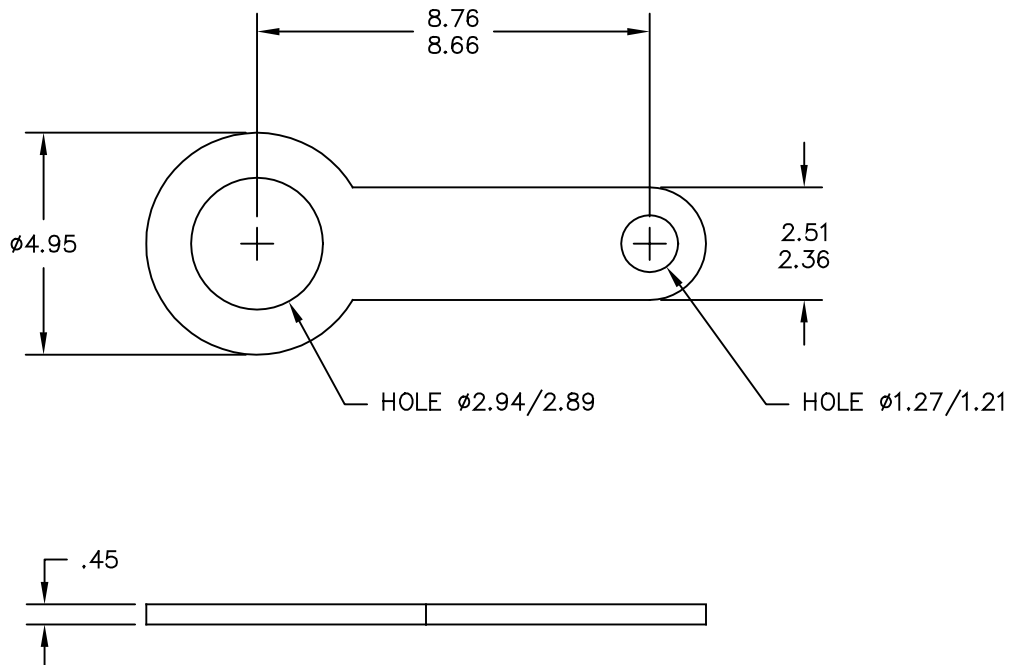




REV A	APPLICATION		REVISIONS			
	NEXT ASSY	USED ON	REV.	DESCRIPTION	DATE	APPROVED
SH 1			A	ECN 775-20601	TV	12-11-00

DWG. NO. 616-078



FINISH
 TINNED SOLDERABLE FINISH USING ONE OF THE FOLLOWING PROCESSES: -
 NICKEL OR COPPER PLATE TO BS 1872 (1964) SN 2C
 FOLLOWED BY EITHER: -
 HOT TIN DIP
 OR HOT SOLDER DIP
 OR ELECTRO TIN PLATE AND FLOW MELT
 OR ELECTRO TIN/LEAD PLATE AND FLOW MELT.

SUGGESTED SOURCE:

P/N CAGE VENDOR NAME

ALL MEASUREMENTS ARE IN MM.

G431/6BA K0017 TUCKER FASTENERS LTD

THIS DESIGN & DWG. ARE THE PROPERTY OF THOMAS ELECTRONICS, INC. THE CORP. DOES NOT PERMIT THEIR USE EXCEPT WITH WRITTEN PERMISSION.

UNLESS OTHERWISE SPECIFIED DIMENSIONS ARE IN INCHES TOLERANCES ARE: FRACTIONS DECIMALS ANGLES ± XX± ±	CONTRACT NO.		THOMAS ELECTRONICS 100 RIVERVIEW DRIVE, WAYNE, NJ 07470, U.S.A.			
	APPROVALS	DATE				
MATERIAL	DRAWN T. VIDAL	8/1/00	TERMINAL LUG, SOLDER			
FINISH SEE ABOVE	CHECKED					
DO NOT SCALE DRAWING	ISSUED		SIZE A	FSCM NO. 01852	DWG. NO. 616-078	REV. A
			SCALE 1/4	"0"	SHEET 1 OF 1	

