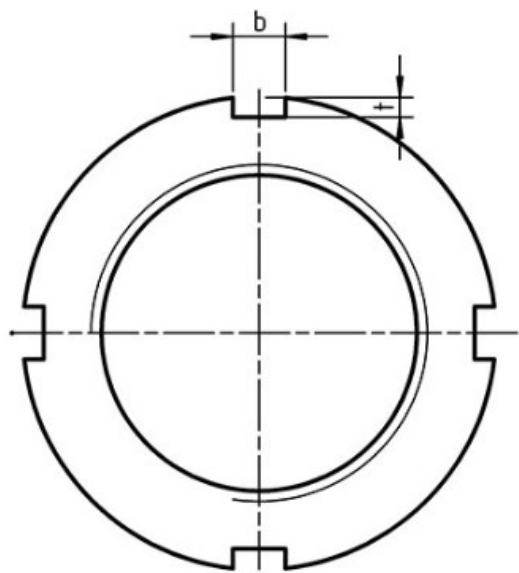
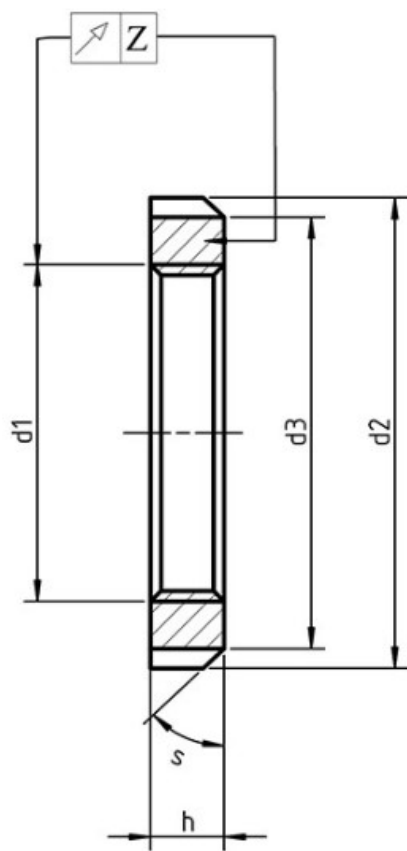


Item similar as per follows items.

DIN 981 - Locknuts

Equivalent norms: CSN 23630;



dimensions in mm								
d1	d2	d3	h	b	t	z	weight kg/pc	marking
M20x1	32	26	6	4	2	0,04	0,019	KM4

d1 - the nominal diameter of the thread

d2 - inner diameter of the nut

t - notch depth

b - width of the notch

h - height of the nut

d3 - spacing