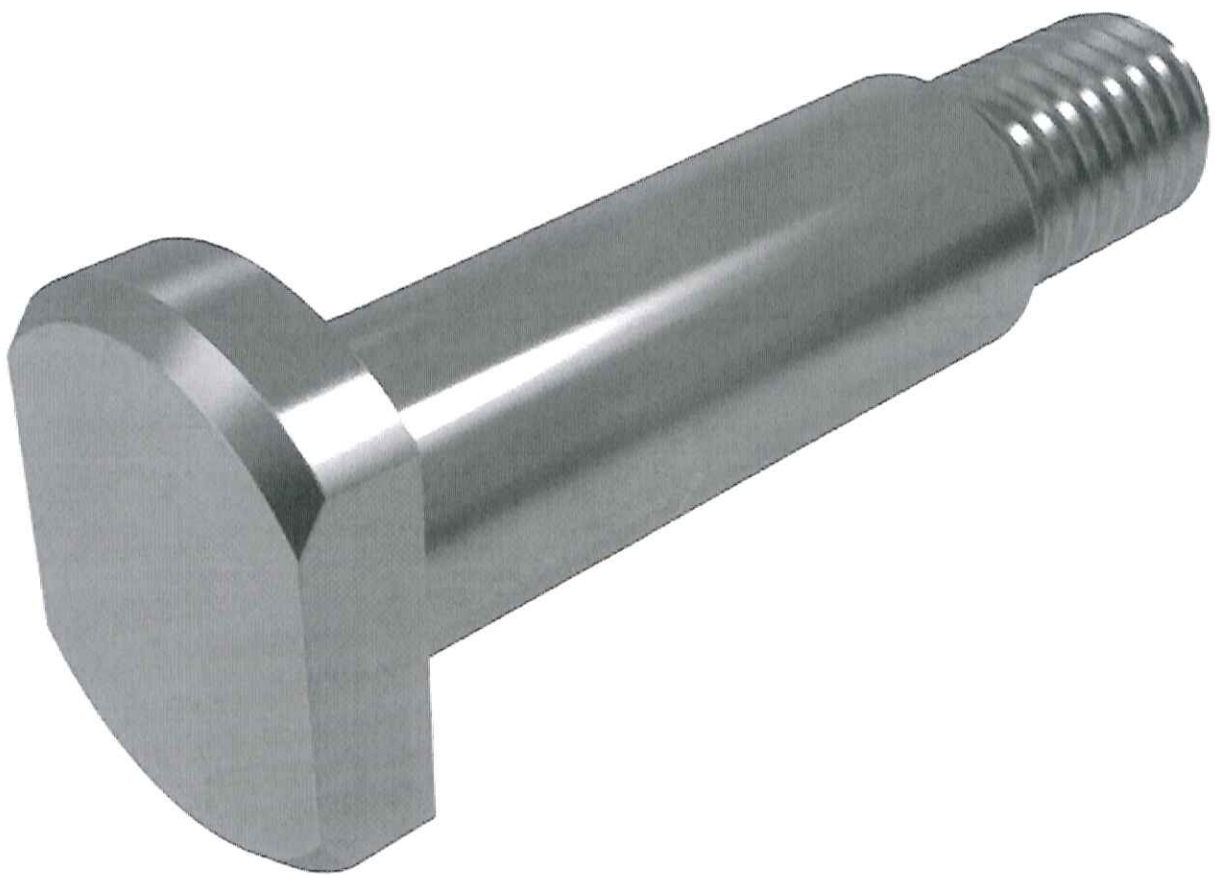


DIN 1445 - Bolzen mit Kopf und Gewindezapfen

Äquivalente Normen: PN 83007;



Lagertechnik Katalog

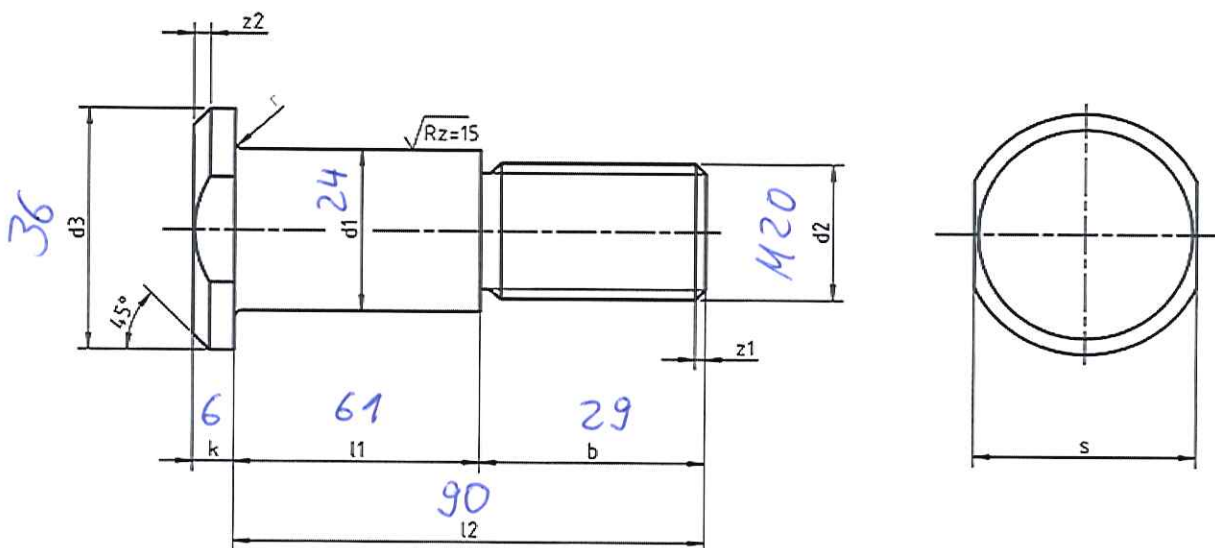
Entdecken Sie die Produktvielfalt von BITO Lagertechnik. Regale, Schränke, Behälter & mehr

BITO Lagertechnik

ÖFFNEN

ANFRAGE ABSENDEN
([HTTPS://WWW.FASTENERS.EU/DE/INQUIRY/ADD/](https://www.fasteners.eu/de/inquiry/add/))

- Firmen
- Technische Infos
- 3D Model
- Anfragen
- Lagerbestände



Legende:

- I - Stiftlänge
- z1 - fase
- z2 - fase
- d2 - der Nenndurchmesser des Gewindes
- d3 - Kopfdurchmesser
- b - Länge des Fadens
- d1 - bolzen diameter
- s - Kopfbreite
- k - Kopfhöhe

Eigeschaften:

- Stahl:** steel
- Edelstahl:** -
- Kunststoffe:**
- Nichteisenmetalle:** -
- Gewinde:** 6g

Bemerkungen:

-

Tabelle nach DIN 1445:

| Abmessungen in mm | | | | | | | | | | |
|-------------------|------|-----|-----|-----|-----|-----|-----|-----|--|-----|
| d1 | h11 | 8 | 10 | 12 | 14 | 16 | 18 | 20 | | 24 |
| b | min. | 11 | 14 | 17 | 20 | 20 | 20 | 25 | | 29 |
| d2 | | M6 | M8 | M10 | M12 | M12 | M12 | M16 | | M20 |
| d3 | h14 | 14 | 18 | 20 | 22 | 25 | 28 | 30 | | 36 |
| k | js14 | 3 | 4 | 4 | 4 | 4,5 | 5 | 5 | | 6 |
| r | | 0,6 | 0,6 | 0,6 | 0,6 | 0,6 | 1 | 1 | | 1 |
| s | | 11 | 13 | 17 | 19 | 22 | 24 | 27 | | 32 |

2

| | | | | | | | | |
|------|---------|------|---|-----|-----|-----|-----|---|
| z2 | approx. | 1 | 1 | 1,6 | 1,6 | 1,6 | 1,6 | 2 |
| l2 | js15 | Mass | | | | | | |
| 16 | | | | | | | | |
| (18) | | | | | | | | |
| 20 | | | | | | | | |
| (22) | | | | | | | | |
| 25 | | | | | | | | |
| (28) | | | | | | | | |
| 30 | | | | | | | | |
| 35 | | | | | | | | |
| 40 | | | | | | | | |
| 45 | | | | | | | | |
| 50 | | | | | | | | |
| 55 | | | | | | | | |
| 60 | | | | | | | | |
| 65 | | | | | | | | |
| 70 | | | | | | | | |
| 75 | | | | | | | | |
| 80 | | | | | | | | |
| 85 | | | | | | | | |
| 90 | | | | | | | | |
| (95) | | | | | | | | |
| 100 | | | | | | | | |


| | | | | | | | | |
|-------|---------|------|-----|-----|-----|-----|-----|-----|
| d1 | | 33 | 36 | 40 | 45 | 50 | 55 | 60 |
| b | min. | 36 | 39 | 42 | 45 | 49 | 52 | 58 |
| d2 | | M24 | M27 | M30 | M33 | M36 | M39 | M42 |
| d3 | h14 | 47 | 50 | 55 | 60 | 66 | 73 | 78 |
| k | js14 | 8 | 8 | 8 | 9 | 9 | 11 | 12 |
| r | | 1 | 1 | 1 | 1 | 1 | 1 | 1 |
| s | | 41 | 46 | 50 | 55 | 60 | 65 | 70 |
| z2 | approx. | 2 | 2 | 2 | 2 | 2 | 3 | 3 |
| l2 | js15 | Mass | | | | | | |
| 60 | | | | | | | | |
| 65 | | | | | | | | |
| 70 | | | | | | | | |
| 75 | | | | | | | | |
| 80 | | | | | | | | |
| 85 | | | | | | | | |
| 90 | | | | | | | | |
| (95) | | | | | | | | |
| 100 | | | | | | | | |
| (105) | | | | | | | | |
| 110 | | | | | | | | |
| (115) | | | | | | | | |
| 120 | | | | | | | | |

| | | | | | | | |
|-------|--|--|--|--|--|--|--|
| (125) | | | | | | | |
| 130 | | | | | | | |
| 140 | | | | | | | |
| 150 | | | | | | | |
| 160 | | | | | | | |
| 170 | | | | | | | |
| 180 | | | | | | | |
| 190 | | | | | | | |
| 200 | | | | | | | |

EU Fasteners Portal, s.r.o.

Novobranská 20
602 00 Brno
Czech republic
(+420) 608 889 223
IČ: 04264100

© 2014 Fasteners.eu, Alle Rechte vorbehalten

Screw (<http://www.besteoverzicht.nl>)  (<http://navrcholu.cz/Statistika/140913/>)

Diese Website verwendet Cookies, um Dienste anzubieten, Anzeigen anzubieten und den Verkehr zu

analysieren. Durch die Nutzung dieser Seite erklären Sie sich damit einverstanden. [Weitere Informationen](#) Ich stimme zu
(<https://www.google.com/intl/cs/policies/technologies/cookies/>)