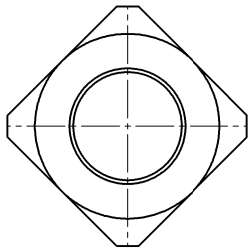
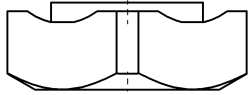
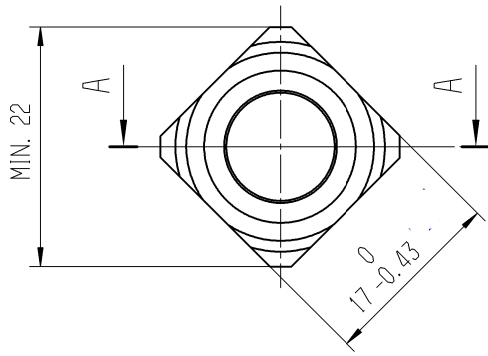
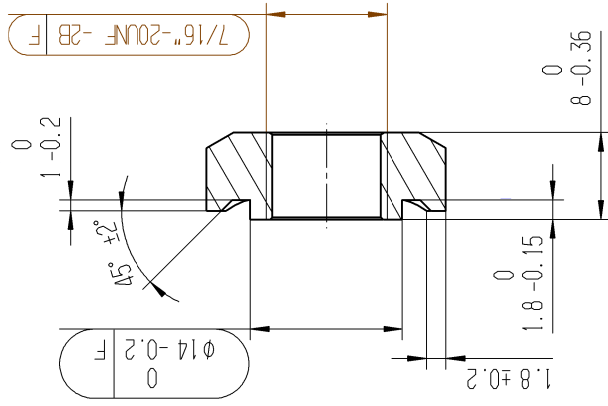
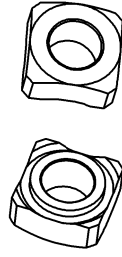


A-A

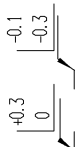


ISO VIEW



TOLERANCE TABLE. 7/16"-20 UNF 2B ACC. ASME B 1.1-2003

9.728	/	10.033	10.287	/	10.424	11.112
CORE ϕ		PITCH ϕ		MAJOR ϕ		
MIN.	/	MAX.	MIN.	/	MAX.	MIN. / MAX.



- PART EDGES: DIN ISO 13715:2000-12
- NO BURRS AND CRACKS PERMITTED.
- PARTS HAVE TO BE FREE OF DIRT, DUST, AND ANY KIND OF CONTAMINATION.
- MISSING DIMENSIONS CAN BE TAKEN FROM CAD MODEL WHICH MATCHES THE PART NUMBER AND REVISION IN THE DRAWING: GENERAL TOLERANCES IF NOT SPECIFIED OTHERWISE: \square 0.5 A B
- SPECIAL AND INSPECTION CHARACTERISTICS ACC. NO2.025-1: 2013-11
- MECHANICAL PROPERTIES ACC. TO ISO 898-2: 2012-08 F IN ACCORDANCE TO PROPERTY CLASS AND APPROXIMATELY TO FINE THREAD M10x1.25

- NO SURFACE TREATMENT. SLIGHTLY OILED TO AVOID CORROSION DURING TRANSPORT
- THE 7/16"-20 UNF-2B MUST BE REACHED AFTER INTENDED COATING: COATING Zn/Fe 8-12 μ m AFTER WELDING PROCESS WITH MATCHING PART

UNLESS OTHERWISE SPECIFIED:
 - GENERAL TOLERANCES PER ISO 2768-mk-E: 1989;
 DIMENSIONS LESS THAN 0.5mm: ± 0.1

MATERIAL: PROPERTY CLASS 8,
 ISO 898-2

SCALE	2 : 1
WEIGHT CALCULATED	9,4 g
WEIGHT MEASURED	g

GLOBAL PART NO.

DRAWING NAME

WELD NUT

DRAWING NO.

PAGE

1 / 1