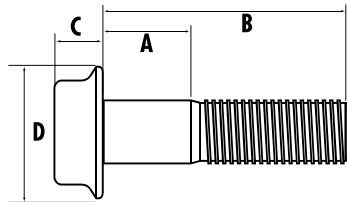


HuckSpin® Lockbolt

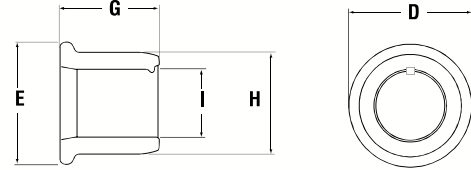
This Grade 10.9 fastening system employs the world's most advanced lockbolt technology to produce a fail-proof joint. Huck-Spin® fastening systems are designed for consistent, reliable installation without the noise and waste associated with pintails. In addition to the round head design, a hex head style is also available which allows the Huck-Spin® to be removed with a standard impact wrench.



Round Head Metric



Round Flange Pin - MHSPF-DT ("Diameter")-(“Grip No”)



Round Flange Collar - MHSCF-R ("Diameter")

Fastener Dimensions

12mm Round Head - MHSPF-DT12-"Grip No."

	Grip No.	Grip range(mm)	A	B
C(max) =9.70	10	4-19	4.0	46.04
D(max) =25.50	15	9-24	9.0	51.04
E(max) =26.25	20	14-29	14.0	56.04
G (ref) =18.49	25	19-34	19.0	61.04
H (ref) =19.30	30	24-39	24.0	66.04
I (ref) =12.29	35	29-44	29.0	71.04
	40	34-49	34.0	76.04
	45	39-54	39.0	81.04
	50	44-59	44.0	86.04

Fastener Dimensions

14mm Round Head - MHSPF-DT14-"Grip No."

	Grip No.	Grip range(mm)	A	B
C(max) =11.50	10	4-19	4.0	54.42
D(max) =30.00	15	9-24	9.0	59.42
E(max) =31.00	20	14-29	14.0	64.42
G (ref) =21.40	25	19-34	19.0	69.42
H (ref) =23.15	30	24-39	24.0	74.42
I (ref) =14.45	35	29-44	29.0	79.42
	40	34-49	34.0	84.42
	45	39-54	39.0	89.42
	50	44-59	44.0	94.42
	55	49-64	49.0	99.42
	60	54-69	54.0	104.42
	65	59-74	59.0	109.42
	70	64-79	64.0	114.42
	75	69-84	69.0	119.42

Fastener Dimensions

16mm Round Head - MHSPF-DT16-"Grip No."

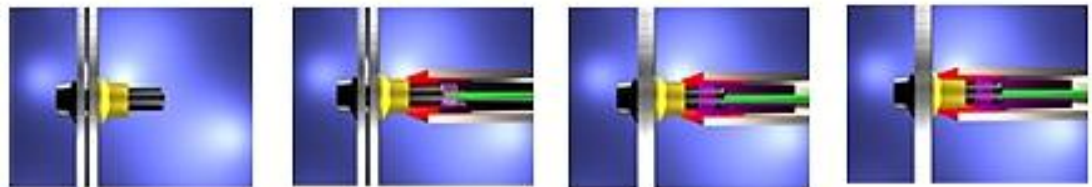
	Grip No.	Grip range(mm)	A	B
C(max) =12.80	10	4-21	4.0	54.41
D(max) =35.00	15	9-26	9.0	59.41
E(max) =34.75	17	10-29	10.0	62.41
G (ref) =23.39	20	14-31	14.0	64.41
H (ref) =25.63	25	19-36	19.0	69.41
I (ref) =16.46	30	24-41	24.0	74.41
	35	29-4	29.0	79.41
	40	34-51	34.0	84.41
	45	39-56	39.0	89.41
	50	44-61	44.0	94.41
	55	49-66	49.0	99.41
	60	54-71	54.0	104.41
	65	59-76	59.0	109.41
	70	64-81	64.0	114.41
	75	69-86	69.0	119.41
	90	84-101	84.0	134.41

Fastener Dimensions

20mm Round Head - MHSPF-DT20-"Grip No."

	Grip No.	Grip range(mm)	A	B
C(max) =16.10	15	9-26	9.0	68.24
D(max) =42.50	20	14-31	14.0	73.24
E(max) =43.05	25	19-36	19.0	78.24
G (ref) =28.80	30	24-41	24.0	83.24
H (ref) =32.10	35	29-46	29.0	88.24
I (ref) =20.45	40	34-51	34.0	93.24
	45	39-56	39.0	98.24
	50	44-61	44.0	103.24
	55	49-66	49.0	108.24
	60	54-71	54.0	113.24
	80	74-91	74.0	133.25

Installation Sequence



[Click Here to view animation of installation sequence](#)