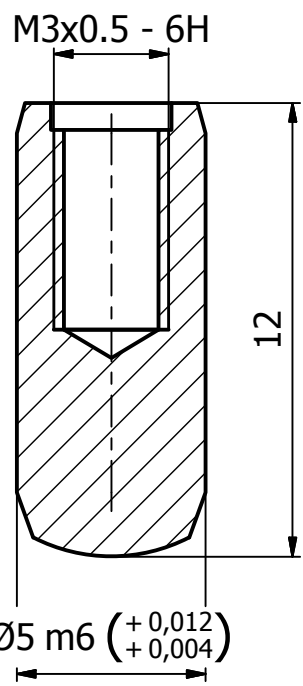


1	2	3	4
---	---	---	---

Note	Revision change description	Dat.	Sign.
------	-----------------------------	------	-------

A

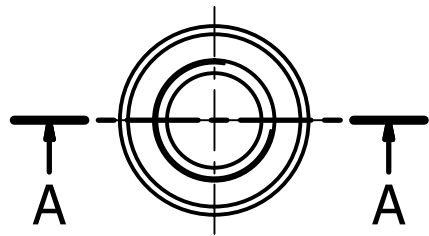
B



Section A-A



Isometric view ( 5 : 1 )



## Notes

1. According to DIN7979 or ISO8735
- 2 Hardened to HRC 60±2

E	1	1	1006290-A (Cylindric pin DIN7979 5x12)	929021	
	Pos	Qty	Name-Rev (Information)	Part No	Reference
			Tolerances unless otherwise stated SS-ISO 2768-m K	Sharp edges broken unless otherwise stated	
			General drawing		
			Replaces		
			Drawing standard: EN ISO		
F	210x297	Drawn	Date	Size	Name
		MLG	2018-09-27	A4	Cylindric pin 5x12
		Scale	Proj		Subtitle
		5:1			
			Belongs to P/N	Approved by	Approved date
					Drawing number-Rev Sheet
					1006290-A
					Sheet no / of
					1 / 1

1	2	3	4
---	---	---	---