

DISPOSE OF COPIES BY	PERM
RETAIN REDDOP COPY (MARKED IN RED) UNTIL	
ERAW SCHEDULE NUMBER 7-1-ESF	

LT RS	REVISIONS		
ORIGINATOR	CHECKER	ENGR APP	MATL APP

RELEASED  
EB00 10682209 000 (S) DATE:961125 CAD: Y

HREBER	DGALIAS	DRBAUER	WJ961126
--------	---------	---------	----------

A1 ADDED TOLERANZ  
EB00 E 10710383 000(S) DATE:970214 CAD: Y

HREBER	DGALIAS	DRBAUER	WJ961126
--------	---------	---------	----------

B1 ADDED TOLERANCE  
B2 REVISED TOLERANCE  
B3 DELETED LETTER W  
EB00 E 10921001 000 (S) DATE:981202 CAD: Y

DGALIAS	DGALIAS	DRBAUER	WJ961125
---------	---------	---------	----------

THE MASTER SOURCE OF INFORMATION FOR THIS DRAWING IS IN A PE COMPUTER DATABASE. CHANGES ARE NOT PERMITTED WITHOUT JOINT AUTHORISATION FROM THE WORLDWIDE FASTENER STANDARDS COMMITTEE AND THE RELEVANT ENGINEERING CAD ACTIVITY

CHANGES AFFECTING DESIGN, COMPOSITION OR PROCESSING OF THE PART PREVIOUSLY APPROVED FOR PRODUCTION, REQUIRE PRIOR APPROVAL FROM WORLDWIDE FASTENER STANDARDS COMMITTEE.

FINISH:- AS RELEASED SEE WX100 FOR SPEC.

MATERIALS DEFINED BY ES/WS-M CALL OUTS REQUIRE PRIOR ENGINEER APPROVAL .SEE FORD ENGINEERING STANDARDS ENGINEERING MATERIAL APPROVED SOURCE LIST.

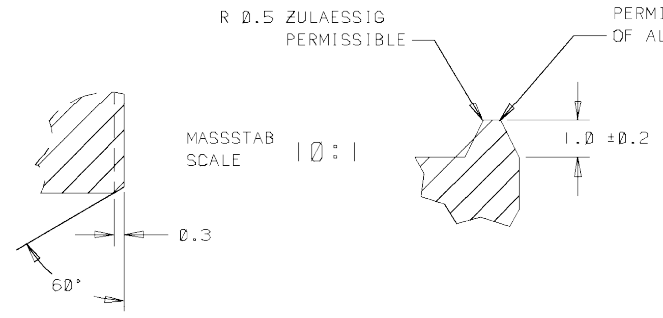
CORROSION PROTECTION FOR SERVICE PARTS.MUST COMPLY WITH   CUSTOMER SERVICE DIVISION (FCSD) PACKAGING AND SHIPPING GUIDE

FOR CURRENT RELEASE STATUS SEE THE WERS ENGINEERING NOTICE

UNLESS OTHERWISE SPECIFIED:  
GENERAL TOLERANCE +5\*

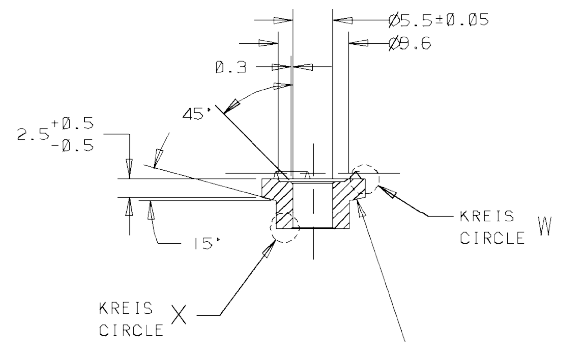
REMARKS:  
DIMENSIONS AND INSTRUCTION WICH ARE NOT DEFINED ARE LEFT TO THE SUPPLIERS DISCRETION PROVIDING THE FUNCTION OF THE PART IS NOT IMPAIRED

MATERIAL:STEEL TO WE960 PC 8

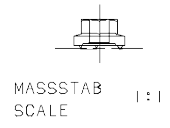


KREISANSICHT  
VIEW IN CIRCLE X

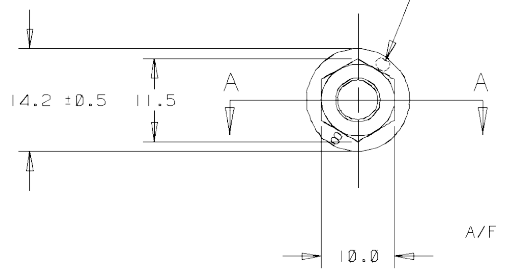
KREISANSICHT  
VIEW IN CIRCLE W



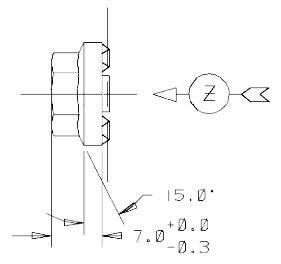
SECT A-A  
LOCATION FOR TRADEMARK AND STRENGTH CLASS



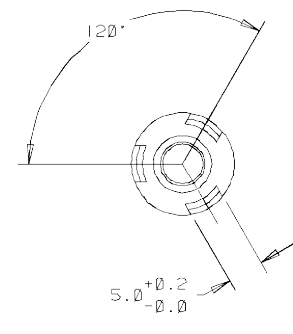
MASSSTAB  
SCALE 1:1



VIEW Y



VIEW Z



VIEW Z

CONFIDENTIAL  
THIS DRAWING AND THE INTELLECTUAL PROPERTY RIGHTS THEREIN ARE THE PROPERTY OF FORD. THE DRAWING MAY ONLY BE USED FOR THE SPECIFIC PURPOSES FOR WHICH IT HAS BEEN SUPPLIED AND MUST BE RETURNED ON REQUEST.  
FORD COPYRIGHT ©

REFERENCE	CATG NO. 250.010	WEICHT
PART MUST COMPLY WITH MATERIAL SPECIFICATION WSS-M99P9899-A1 TO HELP SAFEGUARD HEALTH, SAFETY AND THE ENVIRONMENT.		
DRAFTED IN ACCORDANCE WITH FAO ENGINEERING DRAFTING STANDARD CURRENT AT INITIAL RELEASE		3RD ANGLE PROJ DIMENSIONS IN MILLIMETERS
CAD TYPE F	CAD LOC. G DS	CAD FILE W 703193
OPER. NO.	UNIT	DRAWING W 703193
DESIGN	DETAIL	TITLE NUT 6 HEX FLNG WLD THDLS 8
CHECKED	SAFETY	SHT 1 DF 1 RH/LH
SCALE 2:1	DATE 961125	DIVISION PLANT

DRW SIZE A2/C