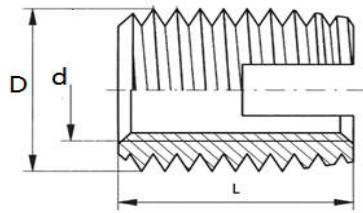
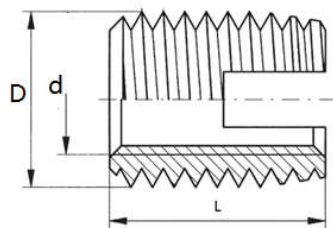


Wuxi LKN fastening systems Co.Ltd



U-slot type self-tapping insert(metric)

Order No.	d	D	L	drill diameter mm			drill depth mm
				plastic	Aluminium	cast iron	
ESTIMU0025	M2.5-0.45	M4.5-0.5	6	4.0-4.1	4.1-4.2	4.2-4.3	8
ESTIMU0003	M3-0.5	M5-0.5	6	4.5-4.6	4.6-4.7	4.7-4.8	8
ESTIMU0004	M4-0.7	M6.5-0.75	8	5.8-5.9	6.0-6.1	6.1-6.2	10
ESTIMU0005	M5-0.8	M8-1.0	10	7.1-7.2	7.3-7.5	7.5-7.6	13
ESTIMU006A	M6a-1.0	M9-1.0	12	8.1-8.2	8.3-8.5	8.5-8.6	15
ESTIMU0006	M6-1.0	M10-1.5	14	9.0-9.2	9.2-9.3	9.3-9.4	17
ESTIMU0008	M8-1.25	M12-1.5	15	10.6-10.8	11-11.2	11.2-11.4	18
ESTIMU0010	M10-1.5	M14-1.5	18	12.6-12.8	13.0-13.3	13.2-13.4	22
ESTIMU0012	M12-1.75	M16-1.5	22	14.6-14.8	15.0-15.3	15.2-15.4	26
ESTIMU0014	M14-2.0	M18-1.5	24	16.6-16.8	17.0-17.3	17.2-17.5	28
ESTIMU0016	M16-2.0	M20-1.5	22	18.6-18.8	19.0-19.3	19.2-19.5	27
ESTIMU0018	M18-2.5	M22-1.5	24	20.6-20.8	21.0-21.3	21.2-21.5	29
ESTIMU0020	M20-2.5	M26-1.5	27	24.6-24.8	25.0-25.3	25.2-25.2	32
ESTIMU0022	M22-2.5	M26-1.5	30	24.6-24.8	25.0-25.3	25.2-25.5	36
ESTIMU0024	M24-3.0	M30-1.5	30	28.6-28.8	29.0-29.3	29.2-29.5	36

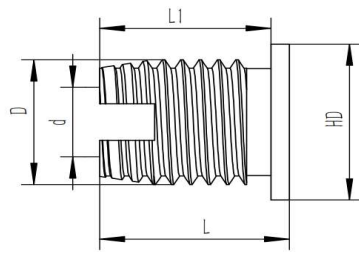


Thin-wall U-slot type self-tapping insert(metric)

Order No.	d	D	L	drill diameter mm			drill depth mm
				plastic	Aluminium	cast iron	
ESTITW003	M3-0.5	M4.5-0.5	6	4.0-4.1	4.1-4.2	4.2-4.3	8
ESTITW004	M4-0.7	M6.0-0.7	6	5.5	5.7	5.7	8
ESTITW005	M5-0.8	M7-0.8	8	6.5	6.6	6.7	10
ESTITW006	M6-1.0	M8-1.0	10	7.5	7.7	7.8	12
ESTITW008	M8-1.25	M10-1.25	12	9.3	9.6	9.7	15
ESTITW0010	M10-1.5	M12-1.5	15	11.3	11.6	11.7	22

material: SUS303 or carbon steel ,
other materials(eg, Bronze) and sizes are available upon specail requests

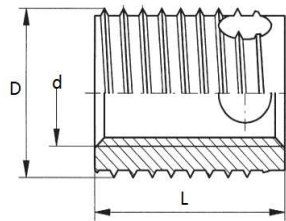
Wuxi LKN fastening systems Co.Ltd



Flanged U-slot type self-tapping insert(metric)

Order No.	d	D	L1	L	HD	drill	drill depth mm
						Aluminium	
ESTIFG004	M4-0.7	M6.5-0.75	8	9	9	5.7	11
ESTIFG005	M5-0.8	M8-1	10	11	11	7.5	13
ESTIFG006	M6-1.0	M10-1.5	14	15.5	13	9.3	17
ESTIFG008	M8-1.25	M12-1.5	15	16.5	15	11.4	18
ESTIFG0010	M10-1.5	M14-1.5	18	19.5	17	13.4	21

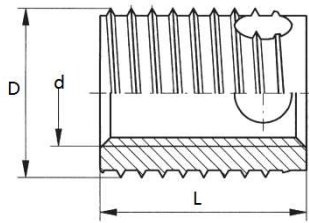
material: SUS303 or carbon steel ,
other materials(eg, Bronze) and sizes are available upon specail requests



3-holes type short self-tapping insert(metric)

Order No.	d	D	L	drill diameter mm			drill depth mm
				plastic	Aluminium	cast iron	
ESTIM3HS0003	M3-0.5	M5-0.6	4	4.4-4.5	4.6-4.7	4.7-4.8	6
ESTIM3HS0004	M4-0.7	M6.5-0.8	6	5.8-5.9	6.0-6.1	6.1-6.2	8
ESTIM3HS0005	M5-0.8	M8-1.0	7	7.3-7.4	7.4-7.5	7.6-7.7	9
ESTIM3HS0006	M6-1.0	M10-1.5	8	9.1-9.2	9.3-9.4	9.5-9.6	10
ESTIM3HS0008	M8-1.25	M12-1.5	9	10.9-11.0	11.1-11.3	11.3-11.5	11
ESTIM3HS0010	M10-1.5	M14-1.5	10	12.9-13.0	13.1-13.3	13.3-13.5	13
ESTIM3HS0012	M12-1.75	M16-1.75	12	14.8-15.0	15.0-16.2	15.3-15.5	15
ESTIM3HS0014	M14-2.0	M18-2.0	14	16.8-17.0	17.0-17.2	17.3-17.5	17
ESTIM3HS0016	M16-2.0	M20-2.0	14	18.8-19.0	19.0-19.2	19.3-19.5	17

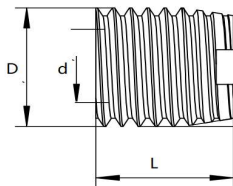
Wuxi LKN fastening systems Co.Ltd



3-holes type long self-tapping insert(metric)

Order No.	d	D	L	drill diameter r			drill depth
ESTIM3HL0003	M3-0.5	M5-0.6	6	4.4-4.5	4.6-4.7	4.7-4.8	8
ESTIM3HL0004	M4-0.7	M6.5-0.8	8	5.8-5.9	6.0-6.1	6.1-6.2	10
ESTIM3HL0005	M5-0.8	M8-1.0	10	7.3-7.4	7.4-7.5	7.6-7.7	13
ESTIM3HL0006	M6-1.0	M10-1.5	12	9.1-9.2	9.3-9.4	9.5-9.6	15
ESTIM3HL0008	M8-1.25	M12-1.5	14	10.9-11.0	11.1-11.3	11.3-11.5	17
ESTIM3HL0010	M10-1.5	M14-1.5	18	12.9-13.0	13.1-13.3	13.3-13.5	22
ESTIM3HL0012	M12-1.75	M16-1.75	22	14.8-15.0	15.0-16.2	15.3-15.5	26
ESTIM3HL0014	M14-2.0	M18-2.0	24	16.8-17.0	17.0-17.2	17.3-17.5	28
ESTIM3HL0016	M16-2.0	M20-2.0	24	18.8-19.0	19.0-19.2	19.3-19.5	28

material: SUS303 or carbon steel ,
other materials(eg, Bronze) and sizes are available upon special requests



convert thread insert with U-slot only stainless steel

Order No.	d	D	L	drill diameter mm			drill depth mm
				plastic	Aluminium	cast iron	
CTIM3OM5-L6	M3-0.5	M5-0.8	6	4.2	4.2	4.2	9
CTIM4OM6-L6	M4-0.7	M6-1.0	6	5	5	5	9
CTIM4OM6-L8	M4-0.7	M6-1.0	8	5	5	5	11
CTIM4OM6-L10	M4-0.7	M6-1.0	10	5	5	5	13
CTIM5OM8-L7	M5-0.8	M8-1.25	7	6.8	6.8	6.8	10
CTIM5OM8-L10	M5-0.8	M8-1.25	10	6.8	6.8	6.8	13
CTIM5OM8-L12	M5-0.8	M8-1.25	12	6.8	6.8	6.8	15
CTIM6OM8F-L10	M6-1	M8-1.0	10	7	7	7	13
CTIM6OM8-L6	M6-1	M8-1.25	6	6.8	6.8	6.8	9
CTIM6OM8-L10	M6-1	M8-1.25	10	6.8	6.8	6.8	13
CTIM6OM8-L15	M6-1	M8-1.25	15	6.8	6.8	6.8	18
CTIM8OM10-L12	M8-1.25	M10-1.5	12	8.5	8.5	8.5	15