



About us:

Snabin International was established in 2007 as a Manufacturing company. The company is located in Ludhiana Punjab (India) with modern facilities for manufacturing and trading of Hex Bolt, Nut, Washer, Foundation bolt, Anchor Bolt, thread bar, Hillside washers etc. The Company has excellent reputation and enjoys the confidence of the overseas and Indian customer.

Infrastructure:

The Company has modern facilities; latest technology, plant and machinery which are used in the manufacturing process with accent on quality and durability. We are continuously striving for synergy between technology and systems to provide products and services that meet the quality, performance and price aspirations of the customers.

Quality:

The Company is well equipped with all the modern testing equipments. Expert technical staff monitor the entire process starting from purchase of raw material till the finished products to ensure the international quality and Standards. Care is taken at every step for timely delivery and complete customer satisfaction through quality and price.

Snabin International

BXXI-8183, Street No.14/3, Gurpal Nagar,
Behind ATI College, Gill Road, Ludhiana-141 003 (India)
Cell : +91-9417013442 Tel.: +91-161-5023442
E-Mail: snabinjt@gmail.com www.snabin.com



**HEX BOLT (FULL THREAD)
SIZE: M6 TO M42 (IS/DIN/ASTM)
GRADE 4.6, 4.8, 8.8, 10.9, 12.9
FINISHING: ZP / BLACK**



**HEX BOLT (HALF THREAD)
SIZE: M6 TO M42 (IS/DIN/ASTM)
GRADE 4.6, 4.8, 8.8, 10.9, 12.9
FINISHING: ZP / BLACK**



**HEX NUT (IS/DIN/2H/10S/ASTM)
SIZE: M6 TO M42
GRADE 4.6, 4.8, 8.8
FINISHING: ZP / BLACK**



**PLAIN WASHER (IS/DIN/ASTM)
SIZE: M6 TO M42
GRADE 4.6, 8.8
FINISHING: ZP / BLACK**



**HEX BOLT, NUT, WASHER
SIZE: M6 TO M16 (IS/DIN/BS)
GRADE 4.6, 4.8, 5.6, 8.8, 10.9
FINISHING: ZP / BLACK**



**SPRING WASHER
SIZE: M6 TO M36 (IS)
MATERIAL: MS / EN42
FINISHING: ZP / BLACK**



HILLSIDE WASHER
SIZE: M12, M18, M20, M22, M27, M30, M32
MATERIAL : CI / SGI
FINISHING: PLAIN/GALVANIZED



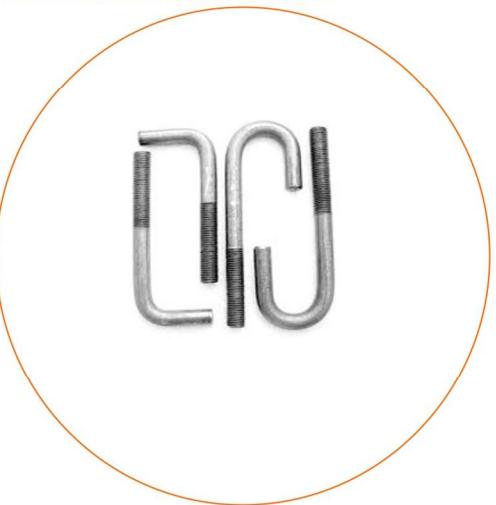
CHANNEL SPRING NUT
SIZE: M6, M8, M10, M12
MATERIAL : MS/ SS
FINISHING: GALVANIZED



FLANGE BOLT (DIN/ISO/EN/JIS)
SIZE: M6 TO M24 (Length to order)
GRADE : 4.6, 8.8, 10.9
FINISHING: GALVANIZED



FLANGE NUT (DIN/ISO/EN/JIS)
SIZE: M6 to M24
GRADE : 4.6, 8.8, 10.9
FINISHING: GALVANIZED



FOUNDATION BOLT (L / J TYPE)
SIZE: M6 TO M32
GRADE : 4.6 / 8.8 / 10.9
FINISHING: GALVANIZED



PROJECTION ANCHOR BOLT
RAWAL ANCHOR BOLT
SIZE: TO ORDER
FINISHING: GALVANIZED